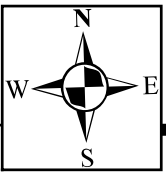
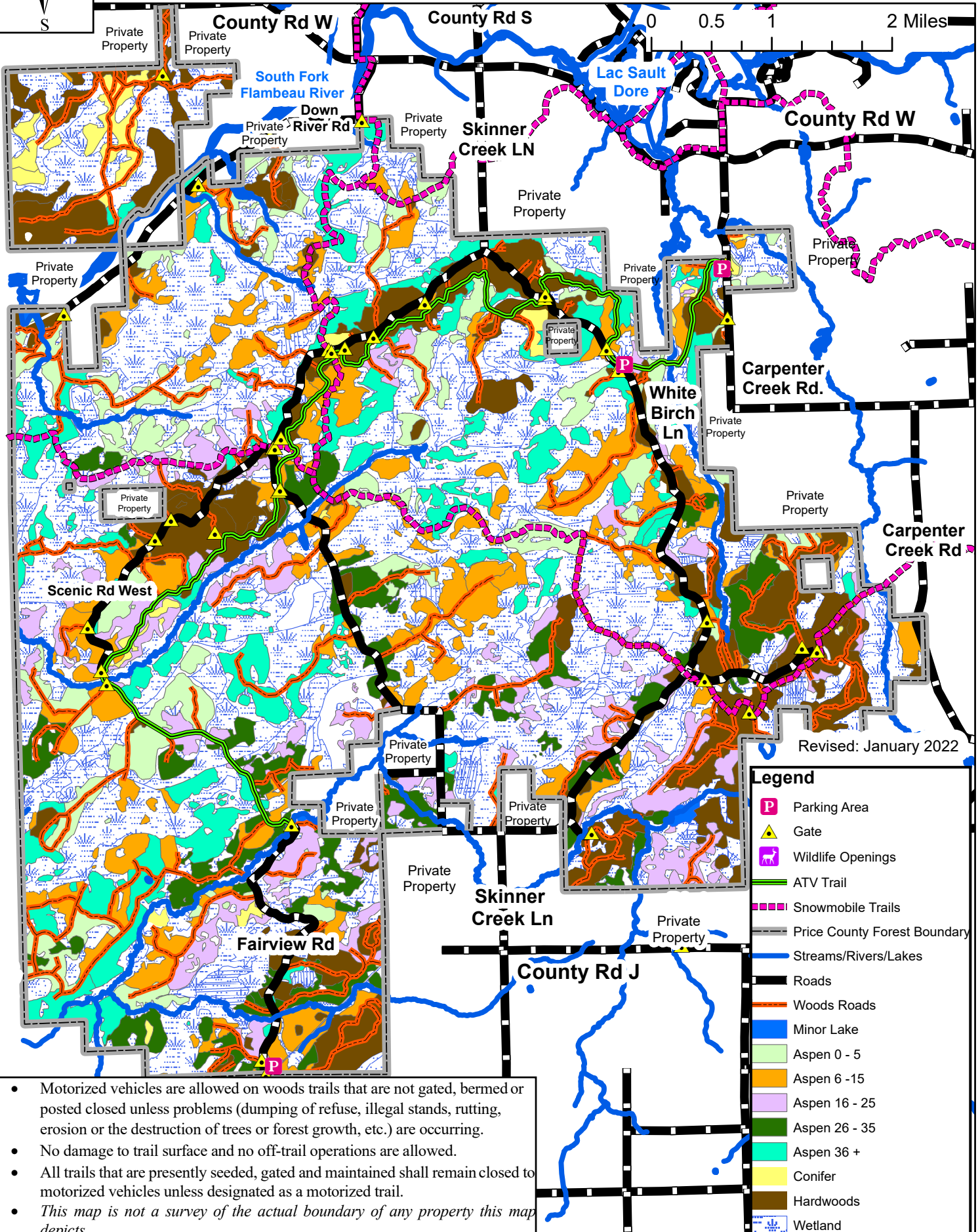


Georgetown Area

T36N R2W, T36N R1W, T37N R1W & T37N R2W



0 0.5 1 2 Miles



- Motorized vehicles are allowed on woods trails that are not gated, bermed or posted closed unless problems (dumping of refuse, illegal stands, rutting, erosion or the destruction of trees or forest growth, etc.) are occurring.
- No damage to trail surface and no off-trail operations are allowed.
- All trails that are presently seeded, gated and maintained shall remain closed to motorized vehicles unless designated as a motorized trail.
- This map is not a survey of the actual boundary of any property this map depicts.*